

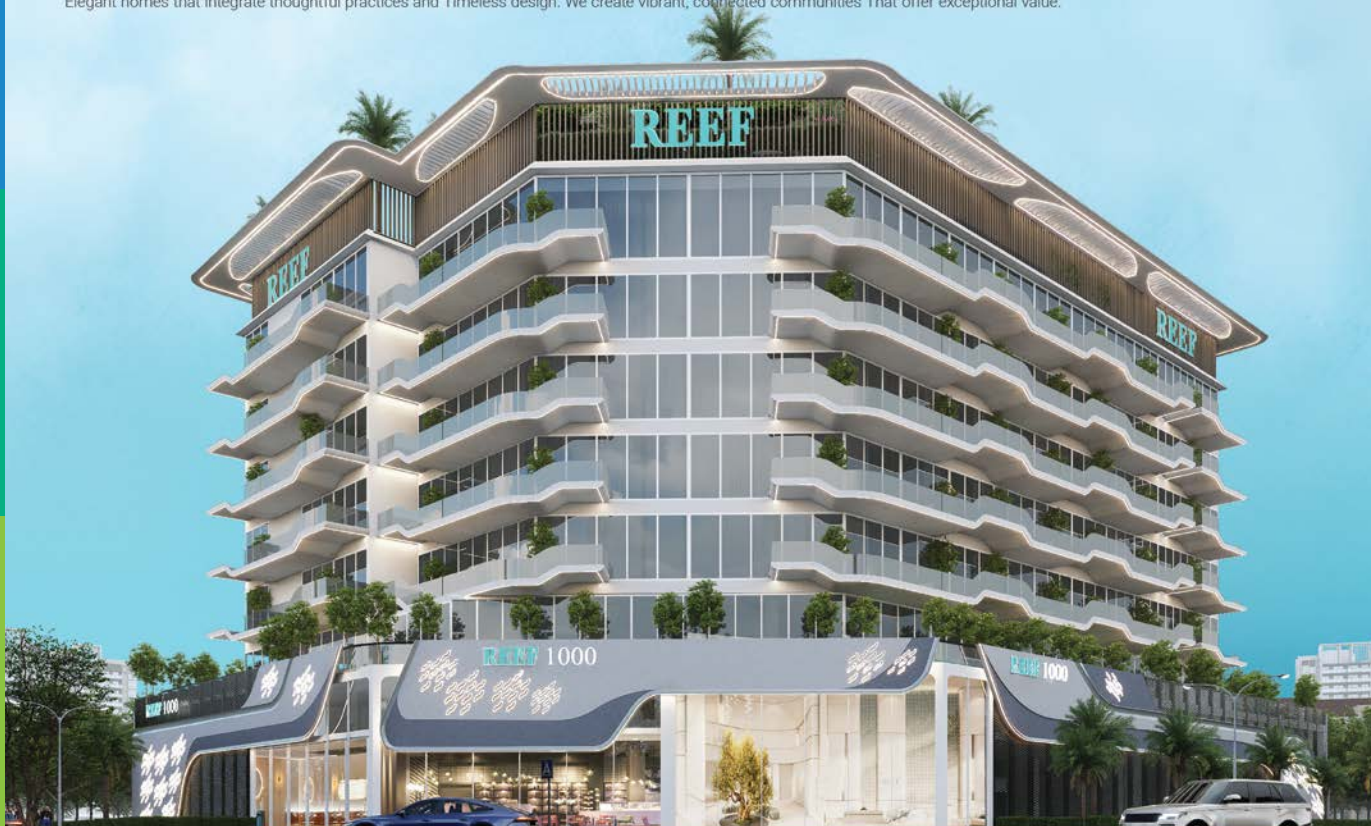
# REEF

LUXURY DEVELOPMENTS

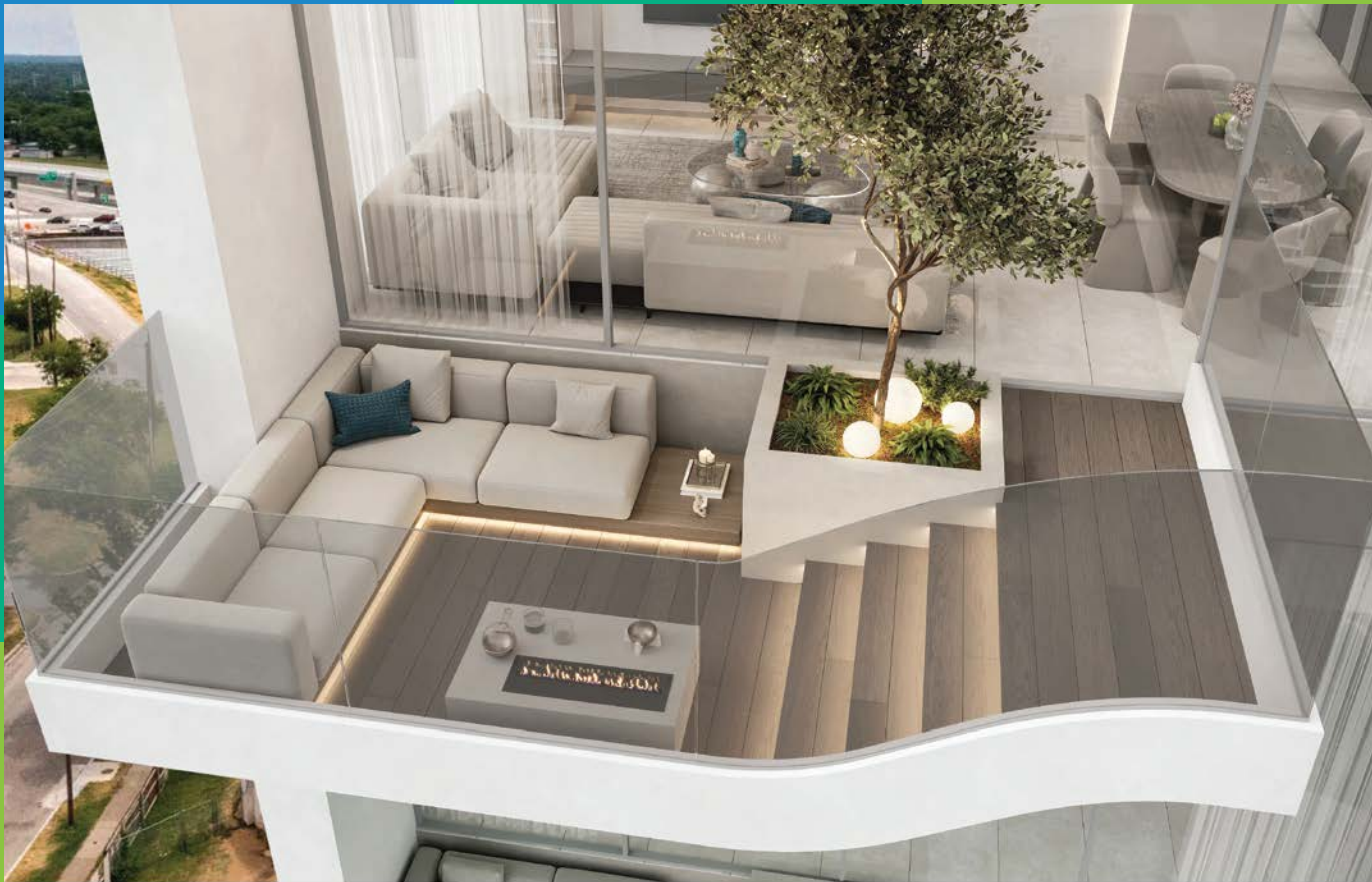


# ABOUT US

At Reef Developments, we redefine luxury living in Dubai by blending innovation with practical solutions. Our commitment to excellence ensures high-quality, elegant homes that integrate thoughtful practices and timeless design. We create vibrant, connected communities that offer exceptional value.



WHY REEF?



### 1. Innovative: Climate Control Sunken Garden

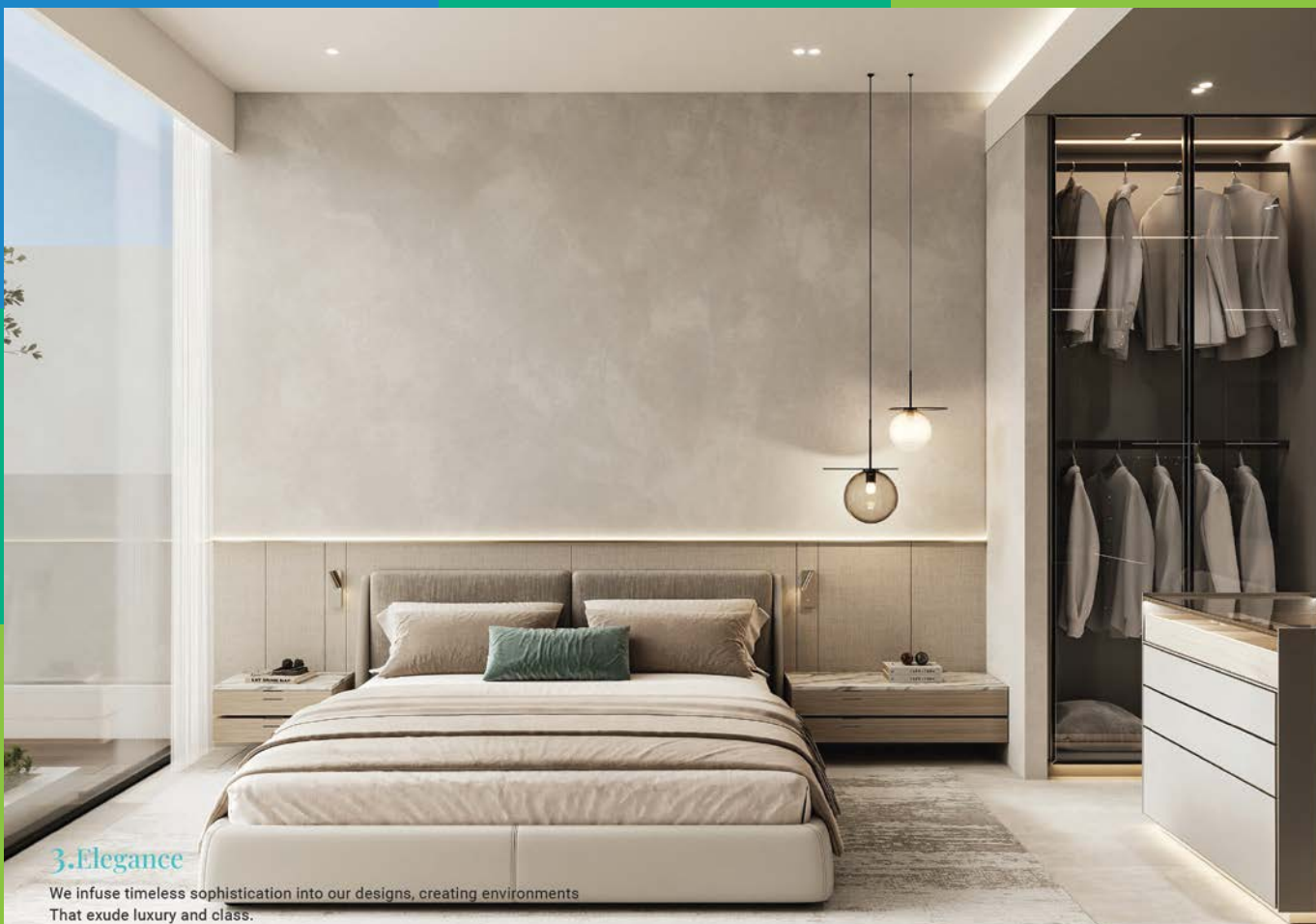
We take pride in introducing our trademark sunken garden concept, an exclusive Feature that sets us apart in the real estate market. As the sole patent holder,





## 2. Value

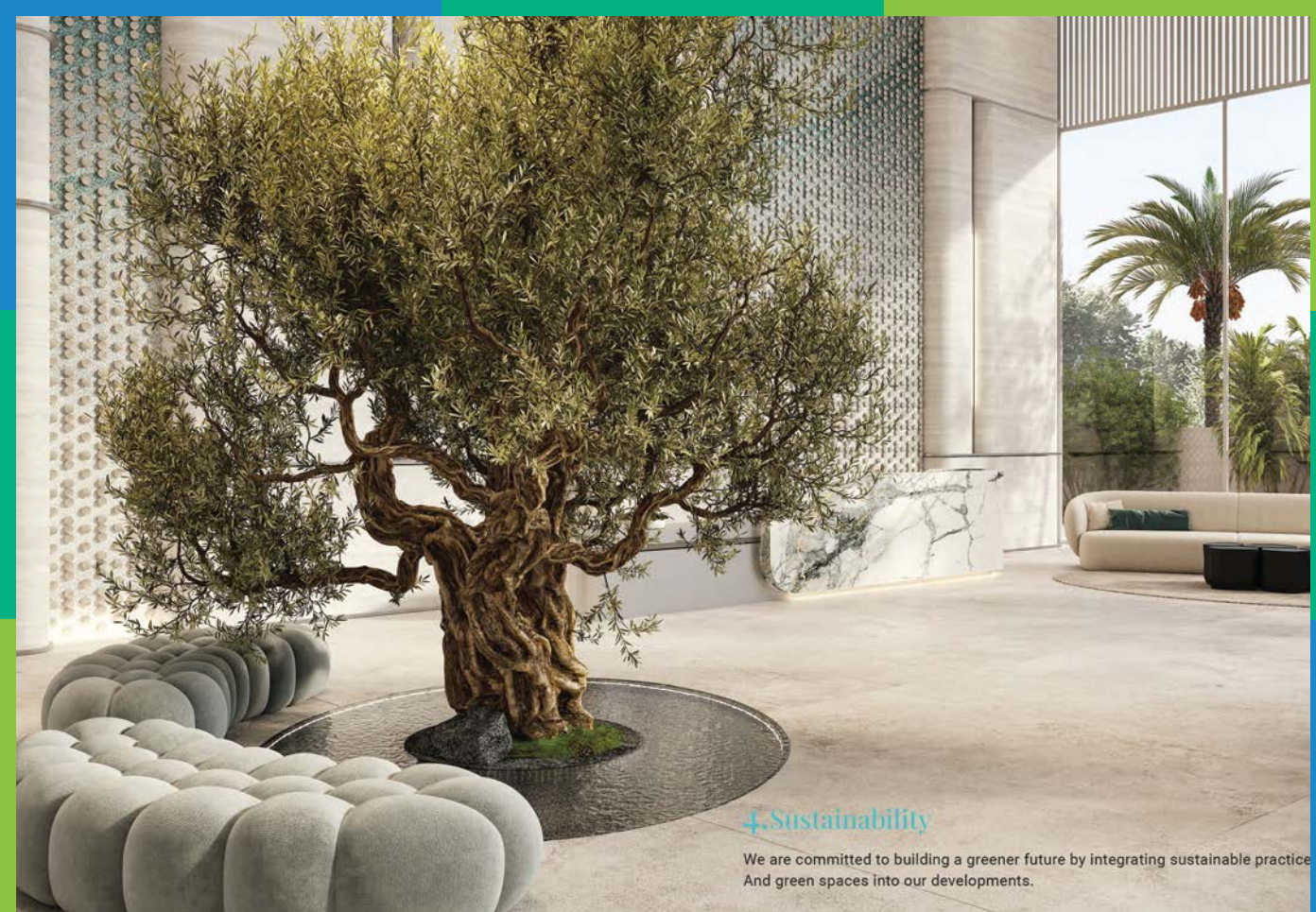
We provide exceptional value by combining luxury, quality, and affordability, Ensuring our clients receive the best possible living experience for their Investments.



### 3.Elegance

We infuse timeless sophistication into our designs, creating environments  
That exude luxury and class.





#### 4. Sustainability

We are committed to building a greener future by integrating sustainable practice  
And green spaces into our developments.

## 5. Community

We believe in creating vibrant and connected communities where people can thrive, enjoy their moments and benefit from a range of amenities that foster these connections.



GUEST VILLA



PRIVATE GARDEN



SUNKEN SEATS



YOGA AREA'S



VEGETABLE GARDEN



ELECTRIC VEHICLE  
RECHARGE STATION



CO WORKING SPACE



4X BBQ AREA



CRICKET PITCH



CROSSFIT AREA



DECKING AREA



INDOOR GYM



JACUZZI



AQUA BIKE



JOGGING TRACK



KIDS PLAY AREA



MULTIPURPOSE COURT



ROOFTOP CINEMA



OUTDOOR GYM



SWIMMING POOL



PICKLE BALL



HIGHEND LAUNDRY  
SERVICE



LOUNGE SEATING



EXERCISE POOL

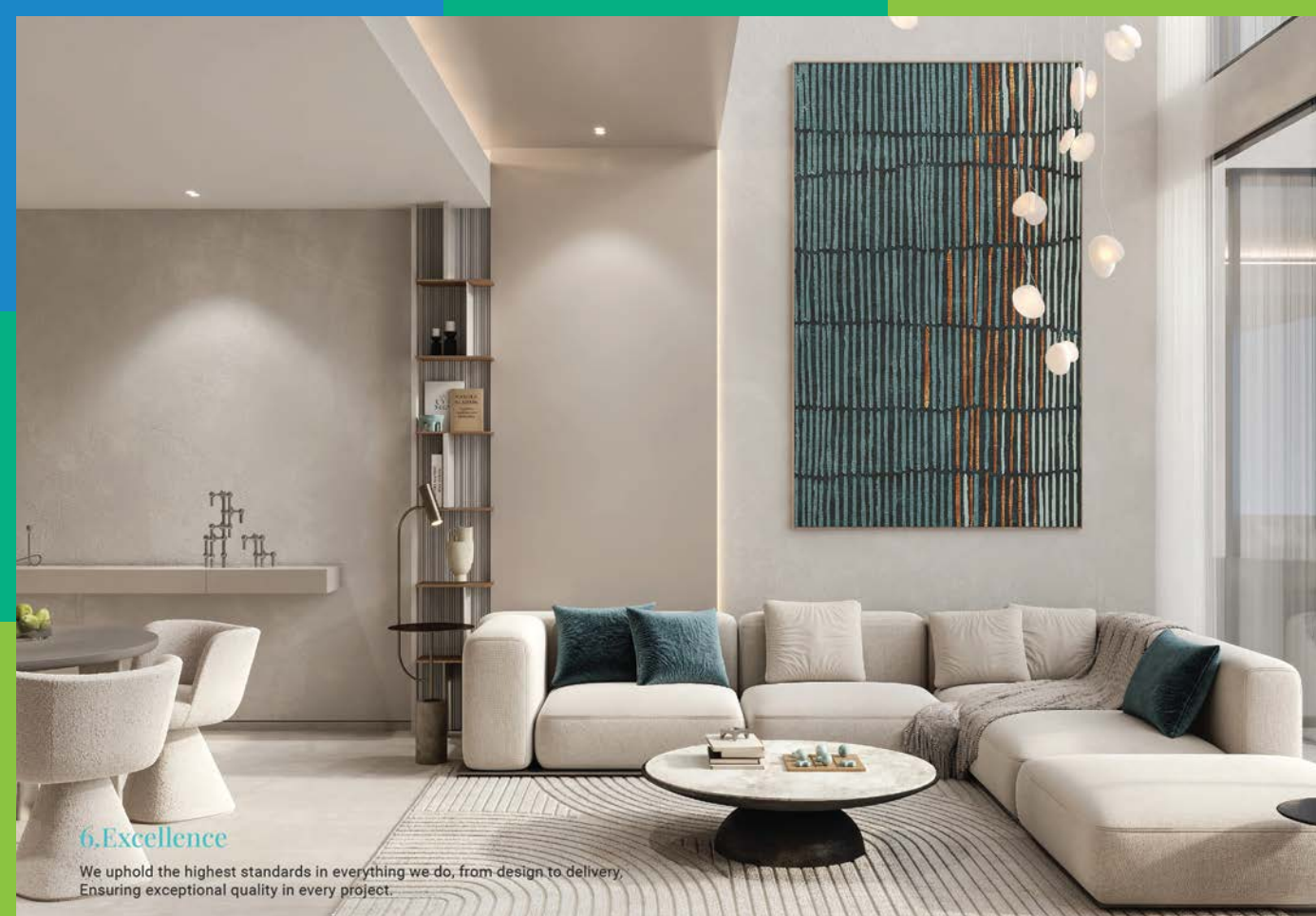


SITTING AREA



BAJA SHELF





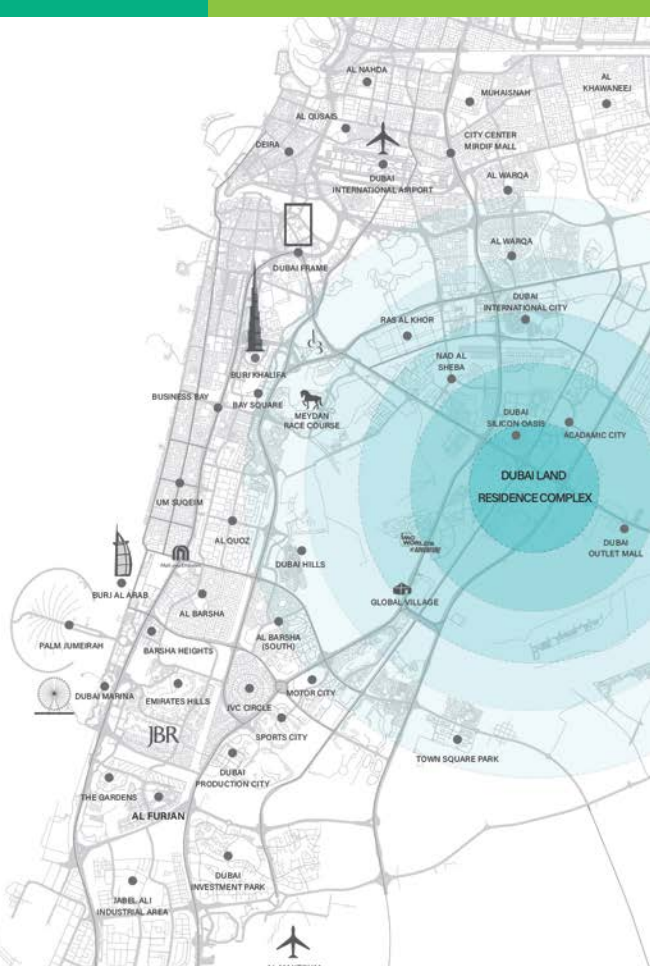
## 6. Excellence

We uphold the highest standards in everything we do, from design to delivery.  
Ensuring exceptional quality in every project.

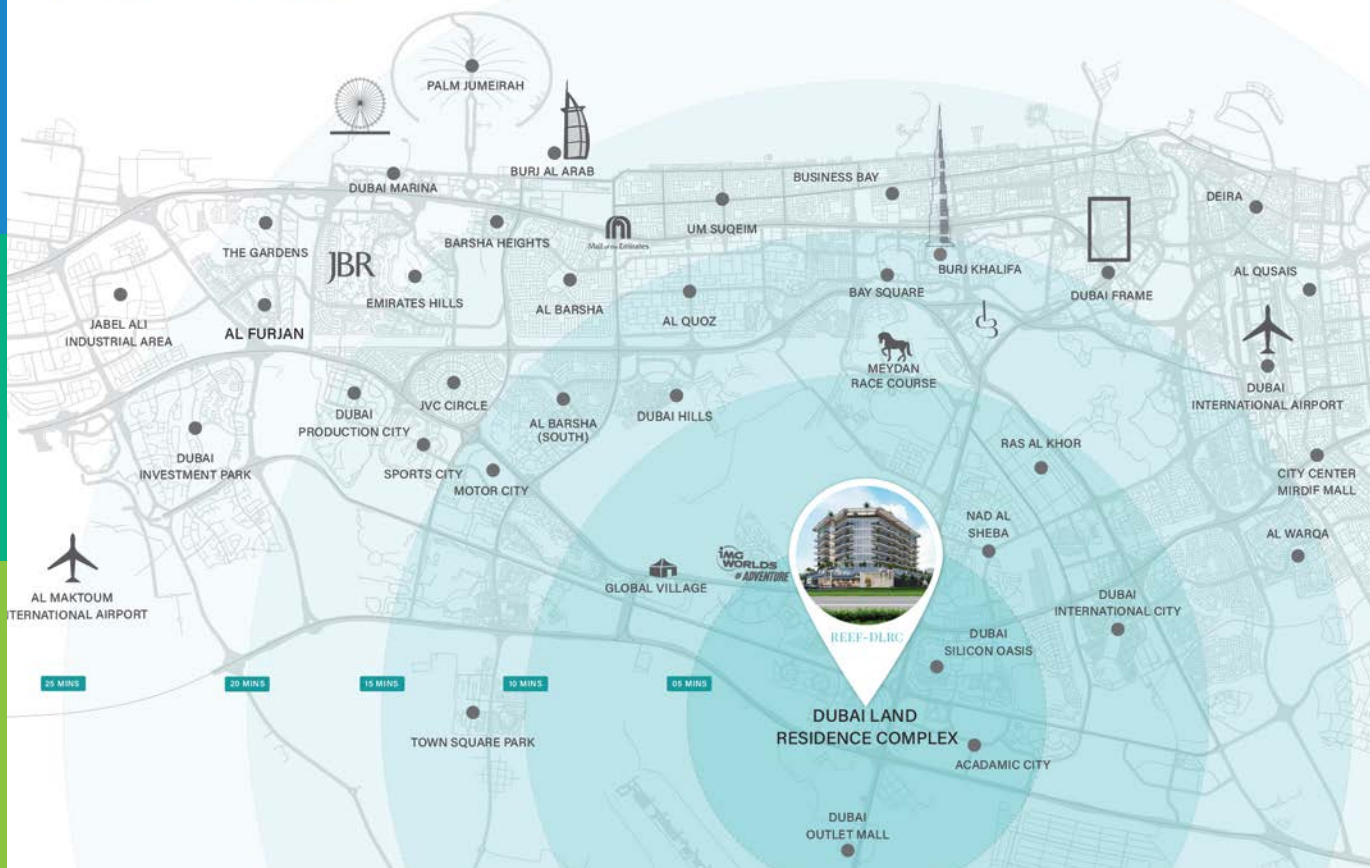
## DUBAI LAND RESIDENCE COMPLEX (DLRC)

Dubai Land Residence Complex (DLRC) is gaining recognition for several reasons. Here are some key factors contributing to its growing reputation:

- **Investment Potential:** Promising for real estate investment with growing demand.
- **Community Amenities:** Shopping, dining, fitness centers and recreational facilities available.
- **Affordable Living:** Cost-effective housing options that don't compromise on quality.
- **Proximity to Landmarks:** Near Dubai Silicon Oasis, Academic City and the Dubai Metro extension.
- **Family-Friendly:** Schools, parks, and healthcare facilities designed for families.
- **Modern Infrastructure:** Contemporary buildings with high-quality construction.



# REEF - DLRC



## NEARBY LANDMARKS



ACADEMIC CITY

5 mins



DUBAI OUTLET MALL

5 mins



GLOBAL VILLAGE

10 mins



IMG WORLDS  
OF ADVENTURE

10 mins



BURJ KHALIFA

15 mins



MEYDAN RACE COURSE

15 mins



HALL OF THE EMIRATES

20 mins



DUBAI  
INTERNATIONAL AIRPORT

20 mins







## BUILDING CONFIGURATION

G+1P+6+R

TOTAL UNITS

125

STUDIO

53

ONE BEDROOM

44

TWO BEDROOM

24

TOWNHOUSE

04

# NARRATIVE



## TRANQUILITY OF THE SEAS

The interior concept philosophy based on the name 'Reef' draws inspiration from the natural beauty and complexity of coral reefs. By harmonizing natural elements with modern design principles, the interior becomes a sanctuary that promotes relaxation and inspiration. It is a philosophy that celebrates the intricate beauty of nature, encouraging a deeper appreciation for the world around us through thoughtful and immersive design.



A decorative border composed of blue and green rectangular segments frames the white central area of the slide.

# INTERIORS













# PODIUM PARADISE

Where Leisure Meets Elegance



GUEST VILLA



VEGETABLE GARDEN



PRIVATE GARDEN



LOUNGE SHELF



YOGA AREA



SWIMMING POOL



SITTING AREA



KIDS PLAY AREA



JOGGING TRACK



JACUZZI



LOUNGE SEATING



DECKING AREA



GYM



SUNKEN SEATS



CO WORKING SPACE





# ROOFTOP RENDEZVOUS

Where dreams connect with the horizon under the embrace of stars



CRICKET PITCH



PICKLE BALL



YOGA AREA



AQUA BIKE



4X BBQ AREA



MULTIPURPOSE COURT



ROOFTOP CINEMA



OUTDOOR GYM



EXERCISE POOL



SITTING AREA



CROSS FIT AREA

# AMENITIES



GUEST VILLA



PRIVATE GARDEN



SUNKEN SEATS



YOGA AREA'S



VEGETABLE GARDEN



ELECTRIC VEHICLE  
RECHARGE STATION



CO WORKING SPACE



4X BBQ AREA



CRICKET PITCH



CROSSFIT AREA



DECKING AREA



INDOOR GYM



JACUZZI



AQUA BIKE



JOGGING TRACK



KIDS PLAY AREA



MULTIPURPOSE COURT



ROOFTOP CINEMA



OUTDOOR GYM



SWIMMING POOL



PICKLE BALL



HIGHEND LAUNDRY  
SERVICE



LOUNGE SEATING



EXERCISE POOL



SITTING AREA



BAJA SHELF



## Guest Villa

Elegant and fully equipped guest villas within the community, offering your visitors a premium and comfortable stay that mirrors the quality of your own residence.



Guest Villa





Guest Villa

## Indoor Gym

A fully equipped, state-of-the-art gym situated outdoors, allowing residents to enjoy their workouts in a refreshing, open-air environment





Indoor Gym



Gym Locker





Indoor Yoga Area

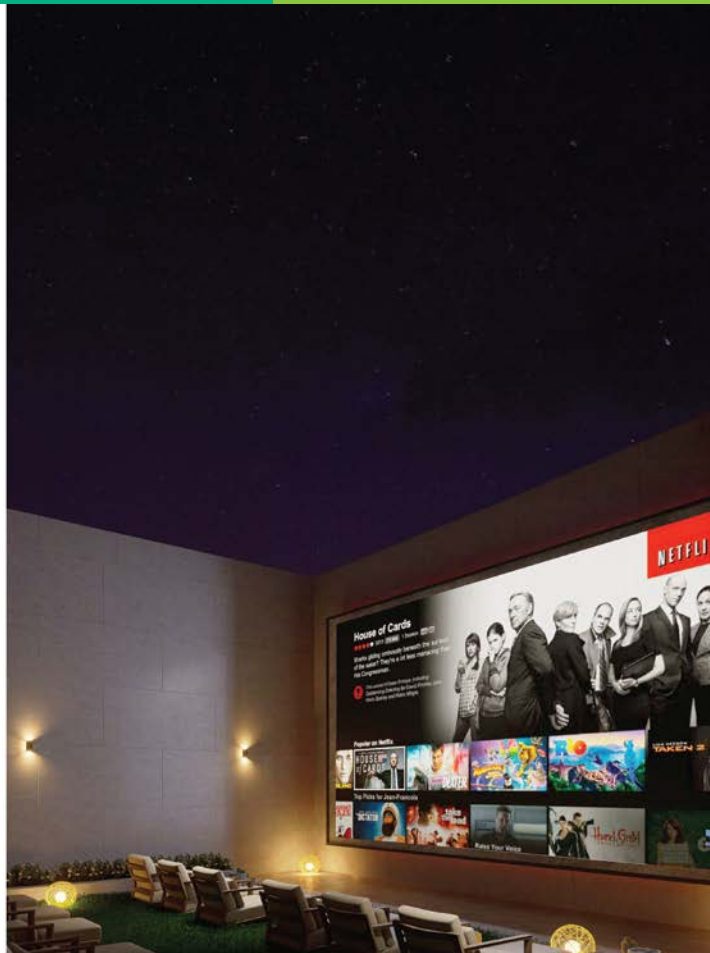


## Baja Shelf

An innovative and sunken seating area submerged into the landscape, offering a unique and immersive socializing experience with an element of style

# Rooftop Cinema

An outdoor cinema experience that brings the magic of the movies under the stars, complete with comfortable seating and a high-quality screen.





Car Parking





Car Parking



Swimming Pool

# STUDIO APARTMENTS

## UNITS SIZE

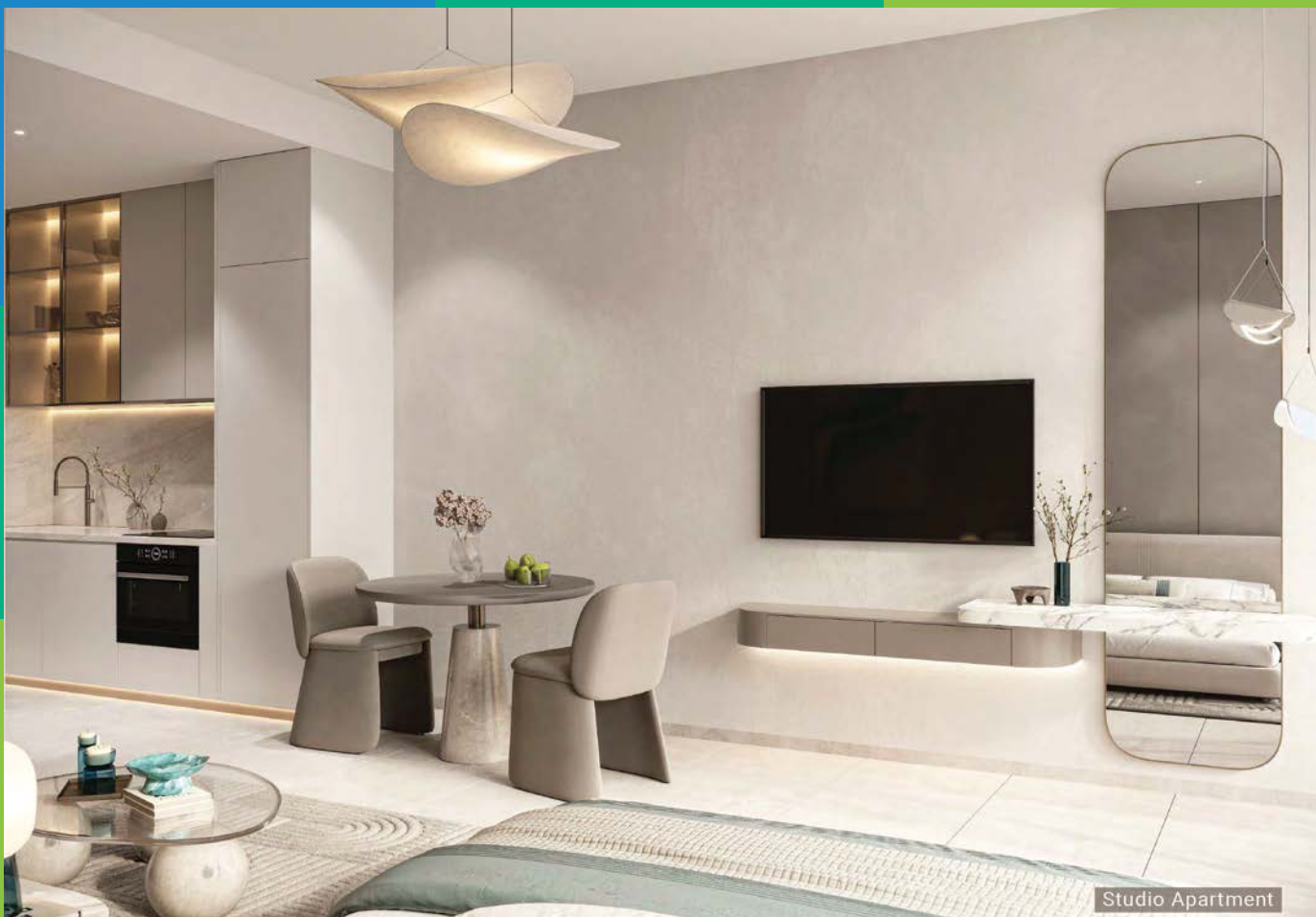
APARTMENTS	UNITS	AREA SQ.FT	
		min	max
STUDIO	53	436.91	487.50



SCAN ME



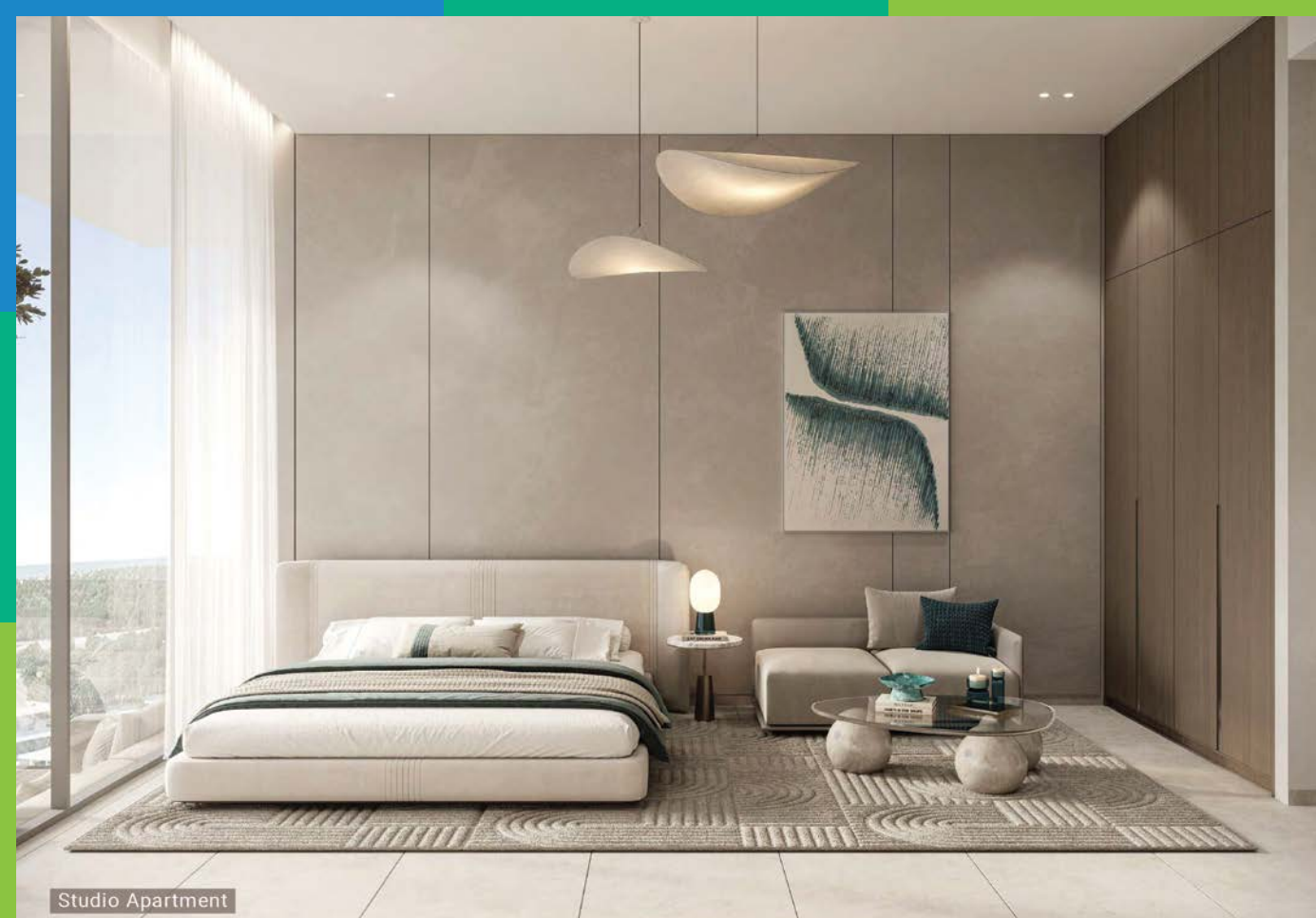




Studio Apartment



Studio Apartment



Studio Apartment



Studio Apartment



Discover a space that embodies ultimate elegance, featuring premium fixtures and thoughtful details that transform your daily routine into a pampering experience.



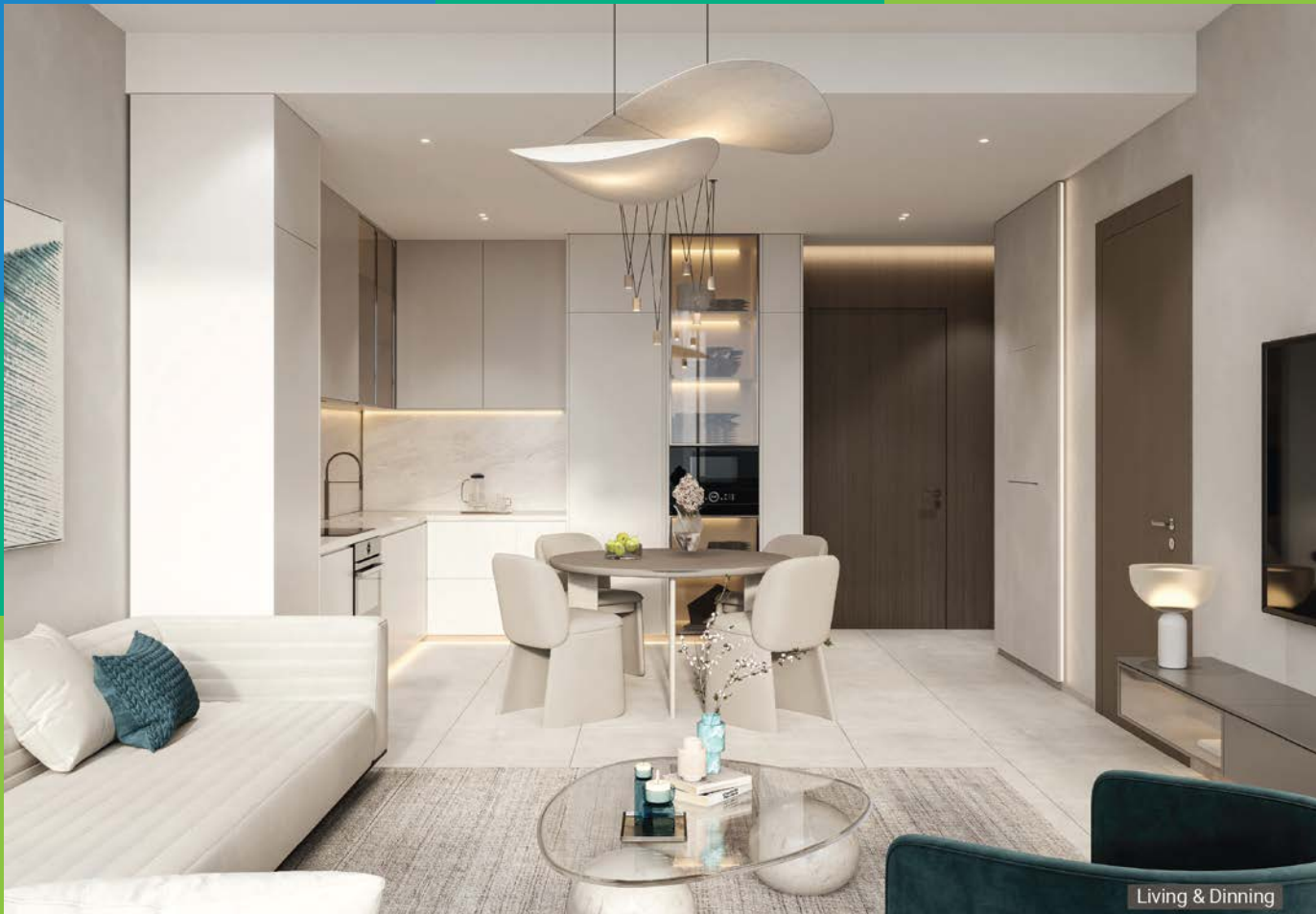
# ONE BEDROOM APARTMENTS

## UNIT SIZE

APARTMENTS	UNITS	AREA SQ.FT	
		min	max
1 BEDROOM	44	752.29	1065.73



SCAN ME

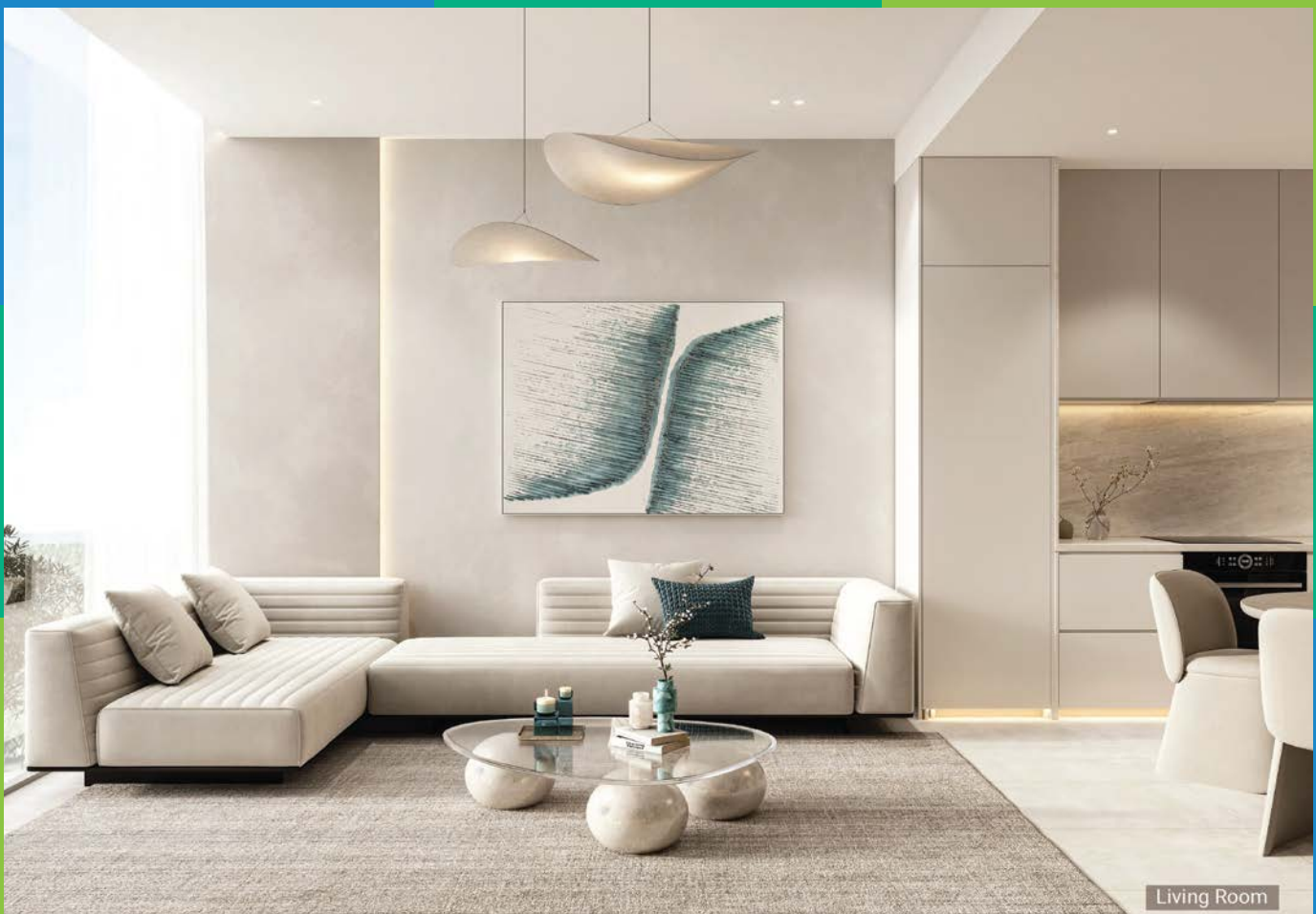


Living & Dinning



TV Lounge





Living Room



Climate Control Sunken Garden



Experience a masterfully designed retreat where refined elegance meets unparalleled comfort, creating a perfect haven for rest and relaxation.

# TWO BEDROOM APARTMENTS

## UNITS SIZE

APARTMENTS	UNITS	AREA SQ.FT	
		min	max
2 BEDROOM	24	1152.38	1369.38



SCAN ME





Kitchen Area



Living & Dinning



Two Bedroom Apartment



Dinning Area





Climate Control Sunken Garden



Bedroom 01

Experience exquisite interiors that blend contemporary design with timeless elegance, creating a sanctuary for relaxation and rejuvenation.

Experience a beautifully designed TV area that blends modern aesthetics with comfort, creating the perfect space for relaxation and entertainment.



Bedroom 02

# TOWN HOUSE

## UNITS SIZE

APARTMENTS	UNITS	AREA SQ.FT	
		min	max
TOWN HOUSE	04	1653.23	1903.81



SCAN ME





Living & Dining - Ground Floor



Dinning & Kitchen



Living Room



TV Lounge - Ground Floor





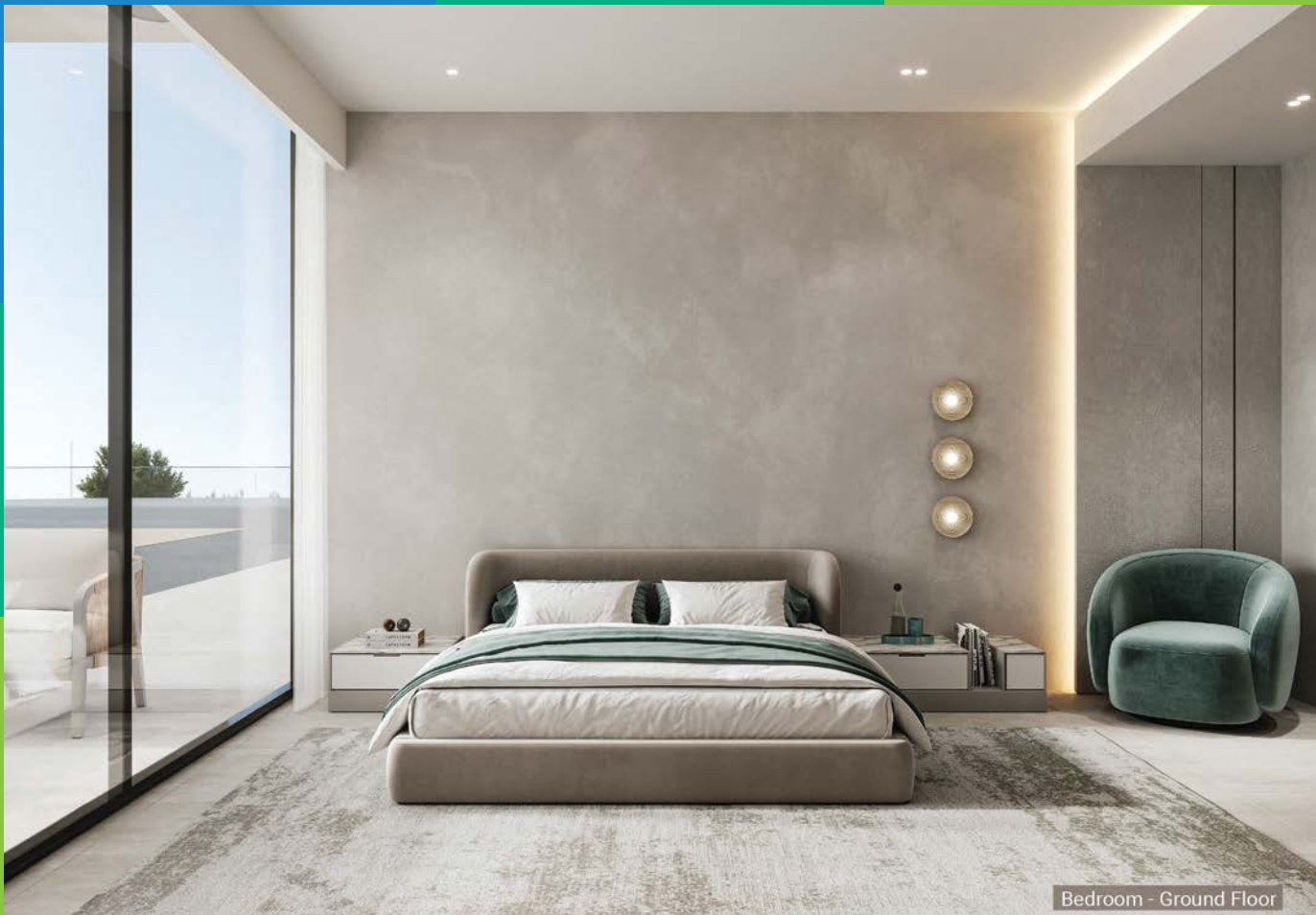
Living Room - Ground Floor



Bedroom - Ground Floor

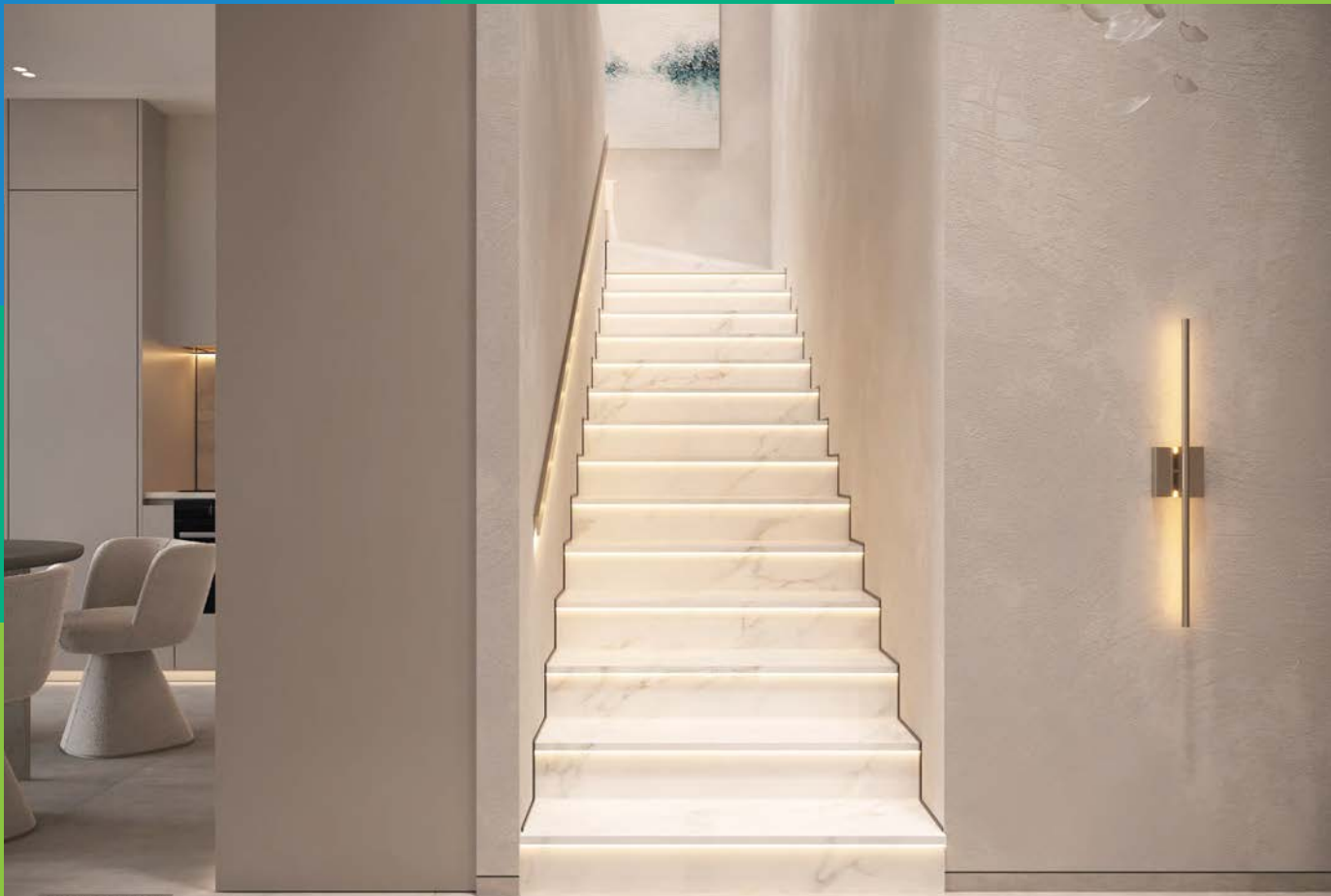


Bedroom - Ground Floor

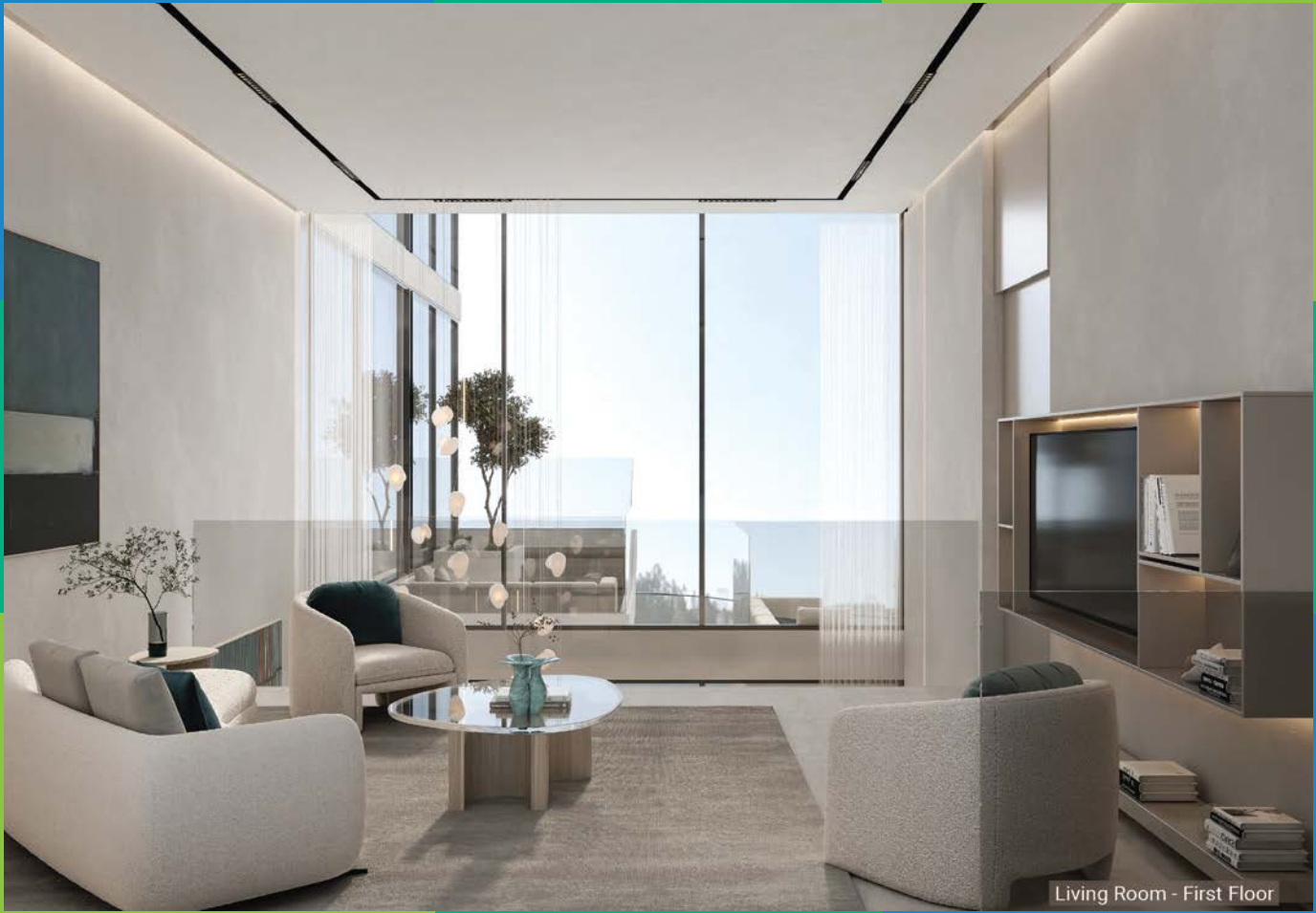


Bedroom - Ground Floor





Ground Floor



Living Room - First Floor



Bedroom - First Floor



Bedroom - First Floor





Bedroom - First Floor







An area that fuses modern aesthetics with premium finishes, creating a rejuvenating ambience.



FOR MORE INFORMATION PLEASE CONTACT



 +971 55 476 7630  
 +971 4 368 7878  
 [info@afsrealestate.com](mailto:info@afsrealestate.com)  
 [www.afsrealestate.com](http://www.afsrealestate.com)



 +971 50 674 2020  
 +971 4 368 7878  
 [info@dubricks.com](mailto:info@dubricks.com)  
 [www.dubricks.com](http://www.dubricks.com)